



RETRACTABLE POWER UNITS



SAFETY AND RELIABILITY SYSTEMS



CUSTOMIZED SOLUTIONS



POWER AND OTHER SUPPLIESONLY WHEN YOU NEED

It is an innovative range of multi-functional disappearing towers for a safer and smarter distribution of energy and services that can be “buried” into the ground and appear only when needed.

The disappearing towers can improve the quality and safety of the environment that surrounds us.

SAFER SYSTEMS FOR ELECTRICAL DISTRIBUTION AND OTHER SUPPLIES

The use of disappearing towers, can help to prevent vandalism and a wrong use of the services. The towers can also be adapted to every kind of environment thanks to the use of different finishes. These are only a few of the advantages that can be obtained by using of the disappearing towers that are already a symbol of high quality and safety.

AREAS OF USE

Squares, market areas, historical centres, public parks, sport centres, shopping malls, parking spaces for caravans and camping areas, villas, gardens, airports, train stations, stadiums, industrial areas etc...

THE SOLUTIONS

The structure of the retractable units is available in stainless steel AISI 304 or in steel FE37 (on demand) painted with epoxy-polyester powder available in a wide range of different colors. The tops of the towers are available in nodular cast iron class D400 or in stainless steel AISI 304 Load 40KN.

They can be round, square, filled or to fill with a material suitable to every specific need.

The movement of the towers can be manual with pull-up or crank handle, or semi-automatic with gas spring.

The towers are also available with a concrete top RBK300 to be used in the street or with an AXYLON® top to be used in pedestrian areas only.

TECHNICAL EQUIPMENTS

Distribution and control system, for electric power, sound installations, data transmission, air compressed, water tap... Etc..





VM01

PRODUCT SPECIFICATIONS

Retractable power supply unit mod. "VM01" VMR, for power distribution and other services; handling options X / Y; stainless steel ASI 304; painted RAL 1021; with TWO fronts available for electrical equipment and TWO fronts available for valves of air distribution and/or water; sliding of the unit, on self-lubricating skates (Polizene®). Lid Type A / B / C; net light mm 500x500; concrete manhole RBK external dimensions mm 600x600h1000

STANDARD COVER TYPES



A. COVER in
STAINLESS STEEL
25T/40T



B. COVER in
NODULAR
CAST IRON
D400 EN 124



C. COVER in
NODULAR CAST IRON
fillable C250/D400

EXAMPLES OF ELECTRICAL CONFIGURATIONS

1. (shows/events)

Nr 1 CEE socket 5p 63A with protection
Nr 1 CEE socket 5p 32A with protection
Nr 1 CEE socket 5p 16A with protection
Nr 4 CEE socket 3p 16A with protection
Nr 1 power supply cable or terminal block

2. (shows/events)

Nr 1 CEE socket 5p 125A with protection
Nr 1 CEE socket 5p 63A with protection
Nr 3 CEE socket 3p 16A with protection
Nr 1 power supply cable or terminal block

3. (marketplaces/camping areas)

Nr 1 CEE socket 5p 32A with protection
Nr 1 CEE socket 5p 16A with protection
Nr 6 CEE socket 3p 16A with protection
Nr 1 power supply cable or terminal block

4. (marketplaces/camping areas)

Nr 4 CEE socket 3p 16A with protection
Nr 4 water outlet with ½" ball valve
Nr 1 stainless steel flexible pipe
Nr 1 power supply cable or terminal block



LIFTING OPTIONS

X. crank opening through worm gear

Y. semi-automatic lifting with gas springs and release key

ADDITIONAL EQUIPMENT

- Water outlet with ½ ¾ 1 Ball Valve
- Compressed air/gas intakes
- Connectors for RJ45, video, phono, audio
- Electrical/water consumption meters
- Latch drill

FRAMEWORK

RBK concrete, external size mm
600x600h1000, side-holes for power line
input (120mm diameter)

CONNECTION SYSTEMS

- By cable type H07RN-F (3mt standard)
- By Terminals with external stainless steel protection box

VM02



PRODUCT SPECIFICATIONS

Retractable power supply unit mod. "VM02" VMR, for power distribution and other services; totally hidden even on duty. Cover in stainless steel, available to fill, or almond finish; sizes A / B / C; cover opening facilitated by a pivot partially pull-out from the lid surface and a dual gas actuator. Cover closing secured by safety lock bayonet in bronze, with lever lock in stainless steel AISI 304 operated with key (square or triangular footprint). Possibility of closing the cover, with the plug inserted (max 1x63A), through a special rubber door for cable outlet. Removable stainless steel plate for water or electrical equipment support (provision for grounding in this case).

VM02_4040



VM02_5050



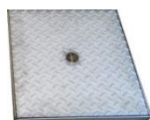
VM02_7050



STANDARD COVER TYPES



A. COVER in STAINLESS STEEL TO FILL- IN up to 40KN with lock and rubber opening for cable



B. COVER in STAINLESS STEEL CLOSED up to 40KN with lock and rubber opening for cable

EXAMPLES OF ELECTRICAL CONFIGURATIONS

1. (shows/events) VM02_4040

Nr2 CEE socket 3p 16A with protection
Nr 1 power supply cable or terminal block

2. (shows/events) VM02_5050

Nr 1 CEE socket 5p 32A with protection
Nr 1 CEE socket 5p 16A with protection
Nr 2 CEE socket 3p 1terminal 6A with protection
Nr 1 power supply cable or block

3. (marketplaces) VM02_5050

Nr 1 CEE socket 5p 32A with protection
Nr 3 CEE socket 3p 16A with protection
Nr 1 power supply cable or terminal block

4. (marketplaces.) VM02_7050

Nr 8 CEE socket 3p 16A with protection
Nr 1 power supply cable or terminal block

5.. (shows/event) VM02_7050

Nr 1 CEE socket 5p 125A with protection
Nr 1 power supply cable or terminal block

LIFTING OPTIONS

Y. semi-automatic lifting with gas springs and release key with pivot to facilitate opening

ADDITIONAL EQUIPMENT

- Water outlet with $\frac{1}{2}$ $\frac{3}{4}$ 1 Ball Valve
- Compressed airConnectors for RJ45, video, phono, audio
- Electrical/water consumption meters
- Key with square footprint

FRAMEWORK

- RBK concrete
- AXYLON max load 25KN

CONNECTION SYSTEMS

- By cable type H07RN-F (3mt standard)in other dorsal concrete
- By internal junction box

VM02 4040/5050/5070

PRODUCT SPECIFICATIONS

Retractable power supply unit mod. "VM03" VMR , for power distribution and other services; totally hidden even on duty. Cover in spheroidal cast iron according to UNI EN 124 Class D 400. Rectangular base 585x540 mm and net opening 485x407mm. Rectangular cover with two rubber openings for cable or pipe outlet. Anti-slip surface (with mandatory inscriptions) class D400, EN 124 and mark of the Certifier. Manhole produced in sites certified according to quality standard ISO 9001. Junction between cover and frame by bronze hinges (replaceables). Cover opening facilitated by a pivot partially pull-out from the lid surface and a dual gas actuator. Cover closing secured by safety lock bayonet in bronze; protected by a hinged door for additional protection against dust and water



STANDARD COVER TYPES



A. COVER in spheroidal cast iron according to UNI EN 124 Class D 400 with bronze hinges; net opening 485x407xH100 with look and rubber opening

LIFTING OPTIONS

Y. semi-automatic lifting with gas springs and release key with pivot to facilitate opening

EXAMPLES OF ELECTRICAL CONFIGURATIONS

1. (shows/events)

Nr 1 CEE socket 5p 63A with protection
Nr 1 power supply cable or terminal block

2. (shows/events)

Nr 1 CEE socket 5p 32A with protection
Nr 1 CEE socket 5p 16A with protection
Nr 1 CEE socket 3p 16A with protection
Nr 1 power supply cable or terminal block

3. (marketplaces/camping areas)

Nr 4 CEE socket 3p 16A with protection
Nr 1 power supply cable or terminal block

4. (marketplaces/camping areas)

Nr 6 CEE socket 3p 16A with protection
Nr 2 water outlet with ½" ball valve
Nr 1 stainless steel flexible pipe
Nr 1 power supply cable or terminal block

5. (marketplaces/camping areas)

Nr 2 CEE socket 3p 16A with protection
Nr 1 power supply cable or terminal block
Nr 2 water outlet with ½" ball valve
Nr 1 stainless steel flexible pipe

ADDITIONAL EQUIPMENT

- Water outlet with ½ ¾ 1 Ball Valve
- Compressed air/gas intakes
- Connectors for RJ45, video, phono, audio
- Electrical/water consumption meters
- Key with square footprint
- Consecutive numbering of the doors
- Identification tag

FRAMEWORK

RBK concrete, size A

CONNECTION SYSTEMS

- By cable type H07RN-F (3mt standard) in other dorsal concrete
- By internal junction box

VM04/VM05



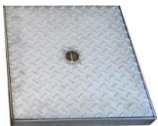
PRODUCT SPECIFICATIONS VM04

Retractable power supply unit mod. "VM04" VMR, for power distribution and other services; cover in stainless steel AISI 304 type A / B. Structure in stainless steel AISI 303/304 bent and painted RAL 1021. Manual lifting using a special hooked handle up to the position of "lock OPEN"
Framework made in concrete RBK

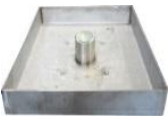
PRODUCT SPECIFICATIONS VM05

Retractable power supply unit mod. "VM05" VMR, for power distribution and other services; cover in stainless steel AISI 304 type A / B. Structure in stainless steel AISI 303/304 bent and painted RAL 1021. Lifting X/Y. Framework made in concrete RBK

STANDARD COVER TYPES



A. COVER in STAINLESS STEEL 304 with almond finishing, net opening 400x300xH60



B. COVER in STAINLESS STEEL 304 fillable with flooring, net opening 400x300xH60



VM04

- Manual lifting using a special hooked handle up to the position of "lock OPEN"



VM05

- manual lifting by worm handle
- semi-automatic lifting with gas springs and release key

EXAMPLES OF ELECTRICAL CONFIGURATIONS

1. (shows/events)

Nr 1 CEE socket 5p 32A with protection
Nr 1 CEE socket 5p 16A with protection
Nr 3 CEE socket 3p 16A with protection
Nr 1 power supply cable or terminal block

2. (shows/events)

Nr 1 CEE socket 5p 32A with protection
Nr 1 CEE socket 5p 16A with protection
Nr 4 CEE socket 3p 16A with protection
Nr 1 power supply cable or terminal block

3. (marketplaces/camping areas)

Nr 1 CEE socket 5p 16A with protection
Nr 6 CEE socket 3p 16A with protection
Nr 1 power supply cable or terminal block

4. (marketplaces/camping areas)

Nr 8 CEE socket 3p 16A with protection
Nr 1 power supply cable or terminal

5. (marketplaces/camping areas)

Nr 4 CEE socket 3p 16A with protection
Nr 1 power supply cable or terminal block
Nr 2 water outlet with ½" ball valve
Nr 1 stainless steel flexible pipe

ADDITIONAL EQUIPMENT

- Water outlet with ½ ¾ 1 Ball Valve
- Compressed air/gas intakes
- Connectors for RJ45, Video, Phono, audio
- Electrical/Water consumption meters
- Buttonhole for Padlock

FRAMEWORK

- RBK concrete
- AXYLON max load 25KN

CONNECTION SYSTEMS

- By cable type H07RN-F (3mt standard) in other dorsal concrete



VM06

PRODUCT SPECIFICATIONS

Retractable power supply unit mod. "VM06" VMR, for power distribution and other services; handling options X / Y; stainless steel ASI 304; painted RAL 1021; with TWO fronts available for electrical equipment. Lid Type A net light mm 500x500;

STANDARD COVER TYPES



A. COVER in spheroidal cast iron D400



EXAMPLES OF ELECTRICAL CONFIGURATIONS

1. (shows/events)

Nr 1 CEE socket 5p 63A with protection
Nr 1 CEE socket 5p 32A with protection
Nr 1 CEE socket 5p 16A with protection
Nr 2 CEE socket 3p 16A with protection
Nr 1 power supply cable or terminal block

2. (shows/events)

Nr 1 CEE socket 5p 63A with protection
Nr 1 CEE socket 5p 32A with protection
Nr 1 CEE socket 5p 16A with protection
Nr 1 CEE socket 3p 16A with protection
Nr 1 power supply cable or terminal block

3. (marketplaces/camping areas)

Nr 1 CEE socket 5p 32A with protection
Nr 1 CEE socket 5p 16A with protection
Nr 6 CEE socket 3p 16A with protection
Nr 1 power supply cable or terminal block

4. (marketplaces/camping areas)

Nr 4 CEE socket 3p 16A with protection
Nr 4 water outlet with ½" ball valve
Nr 1 stainless steel flexible pipe
Nr 1 power supply cable or terminal block

LIFTING OPTIONS

- X.** manual lifting by worm handle
- Y.** semi-automatic lifting with gas springs and release key

ADDITIONAL EQUIPMENT

- Water outlet with ½ ¾ 1 Ball Valve
- Compressed air/gas intakes
- Connectors for RJ45, video; phono audio
- Electrical Water consumption meters
- Latch for opening by drill

FRAMEWORK

RBK concrete, external size
600x600x1000, side-holes for power line
input (120mm diameter)

VM07



PRODUCT SPECIFICATIONS

Retractable power supply unit mod. "VM07" VMR, for power distribution and other services; cover in spheroidal cast iron class C250. Structure in bent stainless steel AISI 303/304 and painted RAL 1021; Manual lifting using a special hooked handle up to the position of "lock OPEN"
Framework in concrete RBK.

STANDARD COVER TYPES



A. COVER IN SPHEROIDAL CAST IRON C250



B. COVER in STAINLESS STEEL up to 40T,
no finishing (fillable) or almond finishing;
net opening 500x500xH60



EXAMPLES OF ELECTRICAL CONFIGURATIONS

1. (shows/events)

Nr 1 CEE socket 5p 63A with protection
Nr 1 CEE socket 5p 16A with protection
Nr 3 CEE socket 3p 16A with protection
Nr 1 power supply cable or terminal block

2. (shows/events)

Nr 1 CEE socket 5p 32A with protection
Nr 1 CEE socket 5p 16A with protection
Nr 4 CEE socket 3p 16A with protection
Nr 1 power supply cable or terminal block

3. (marketplaces/camping areas)

Nr 1 CEE socket 5p 16A with protection
Nr 6 CEE socket 3p 16A with protection
Nr 1 power supply cable or terminal block

4. (marketplaces/camping areas)

Nr 8 CEE socket 3p 16A with protection
Nr 1 power supply cable or terminal

5. (marketplaces/camping areas)

Nr 4 CEE socket 3p 16A with protection
Nr 1 power supply cable or terminal block
Nr 2 water outlet with ½" ball valve
Nr 1 stainless steel flexible pipe

LIFTING OPTIONS

X. Manual lifting using a special hooked handle

Y. Semi-automatic lifting with gas springs and release key

ADDITIONAL EQUIPMENT

- Water outlet with ½ ¾ 1 Ball Valve
- Compressed air/gas intakes
- Connectors for RJ45, video, phono, audio
- Electrical/Water consumption meters
- Buttonhole for Padlock

FRAMEWORK

RBK concrete, size 600x600xH1000, side-holes for power line input (120mm diameter)



VM08

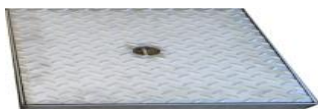
PRODUCT SPECIFICATIONS

Retractable power supply unit mod. "VM08" VMR , for power distribution and other services; handling options X / Y; stainless steel ASI 304; painted RAL 1021; with TWO fronts available for electrical equipment and TWO fronts available for valves of air distribution and/or water; sliding of the unit, on self-lubricating skates (*Polizene*®). Lid Type A / B / C; net light mm 700x500; concrete manhole RBK external dimensions mm 1000x1000h1000

STANDARD COVER TYPES



A. COVER in STAINLESS STEEL
25T/40T fillable



B. COVER in STAINLESS STEEL
25T/40T almond finishing



C. COVER in CAST IRON D400



EXAMPLES OF ELECTRICAL CONFIGURATIONS

1. (shows/events)

- Nr 1 CEE socket 5p 125A with protection
- Nr 2 CEE socket 5p 63A with protection
- Nr 1 CEE socket 5p 16A with protection
- Nr 8 CEE socket 3p 16A with protection
- Nr 1 power supply cable or terminal block
- Nr 2 water sochets with flexible inox pipe

2. (shows/events)

- Nr 4 CEE socket 5p 63A with protection
- Nr 2 CEE socket 5p 32A with protection
- Nr 2 CEE socket 5p 16A with protection
- Nr 8 CEE socket 3p 16A with protection
- Nr 1 power supply cable or terminal block

LIFTING OPTIONS

- X.** crank opening through worm gear
- Y.** semi-automatic lifting with gas springs and release key

ADDITIONAL EQUIPMENT

- Water outlet with ½ ¾ 1 Ball Valve
- Compressed air/gas intakes
- Connectors for RJ45, video, phono, audio
- Electrical/Water consumption meters
- Latch drill

FRAMEWORK

RBK concrete external size mm 1000x1000h1000
TOTAL WEIGHT 1000 KG

VM09

PRODUCT SPECIFICATION

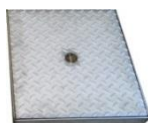
Retractable power supply unit mod. "VM09" VMR, for power distribution and other services; totally hidden even on duty. Cover in stainless steel, available to fill, cover opening facilitated by a pivot partially pull-out from the lid surface and a dual gas actuator. Cover closing secured by safety lock bayonet in bronze, with lever lock in stainless steel AISI 304 operated with key (square or triangular footprint). Possibility of closing the cover, with the plug inserted (max 1x600A), through a special inox door for cable outlet. System of inclination of the plate equipment in order to facilitate an easier insertion of the plugs.



STANDARD COVER TYPES



A. COVER in STAINLESS STEEL TO FILL up to 40KN with lock and rubber opening for cable



B. COVER in STAINLESS STEEL CLOSED up to 40KN with lock and rubber opening for cable

LIFTING OPTIONS

Y. semi-automatic lifting with gas springs and release key with pivot to facilitate opening

EXAMPLES OF ELECTRICAL CONFIGURATIONS

1. (industrial areas)

Nr 1 CEE socket 5p 125A with protection
Nr 1 power supply cable or terminal block

2. (shows/event)

Nr 1 CEE socket 5p 400A with protection
Nr 1 power supply cable or terminal block

ADDITIONAL EQUIPMENT

- Water outlet with ½ ¾ 1 Ball Valve
- Compressed airConnectors for RJ45, video, phono, audio
- Electrical/water consumption meters
- Key with square footprint

FRAMEWORK

- RBK concrete
- AXYLON max load 25KN

CONNECTION SYSTEMS

. By internal junction box



A. POLYPROPYLENE COVER – PEDESTRIAN LOAD.
Dimension from 300X300mm to 500X500mm
to be arranged, according to specification required



EXAMPLES OF ELECTRICAL CONFIGURATIONS

1. (shows/events)

- Nr 1 CEE socket 5p 32A with protection
- Nr 1 CEE socket 3p 16A c with protection
- Nr 1 power supply cable or terminal block

2. (mercati/camping)

- Nr 1 CEE socket 5p 32A with protection
- Nr 1 CEE socket 5p 16A with protection
- Nr 2 CEE socket 3p 16A with protection
- Nr 1 power supply cable or terminal block

LIFTING OPTIONS

X. Manual lifting – rod with mechanical stop

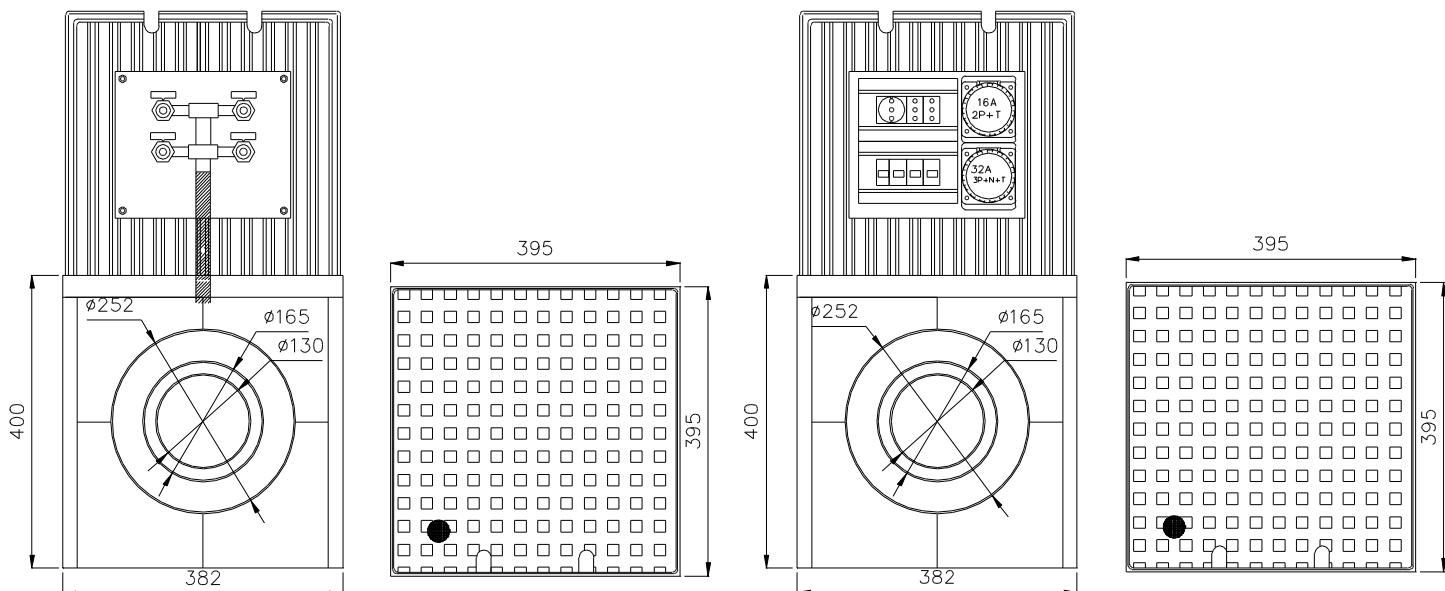
ADDITIONAL EQUIPMENT

- Water outlet with ½ ¾ 1 Ball Valve
- Compressed air/gas intakes
- Connectors for RJ45, video, phono, audio
- Electrical/Water consumption meters
- Key with square footprint

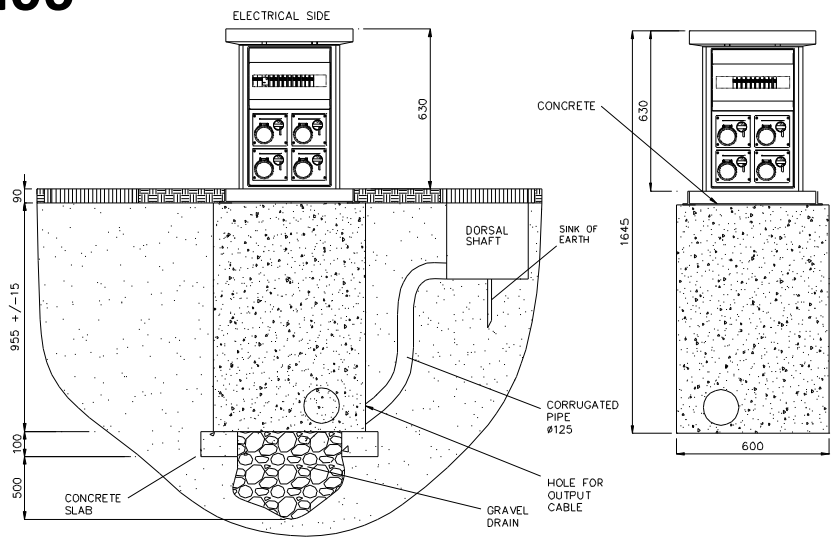
FRAMEWORK

Polypropylene handwork

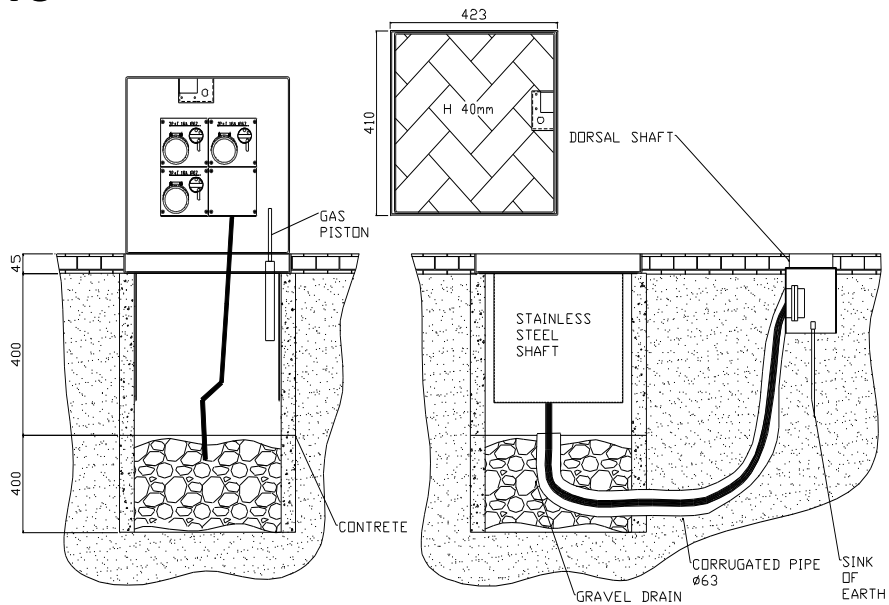
VM10



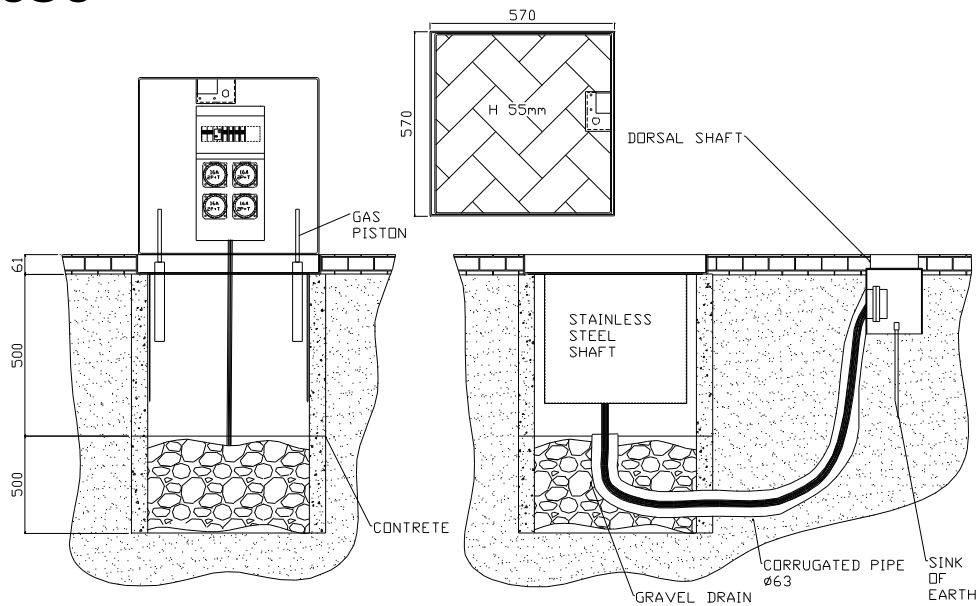
VM01/VM06



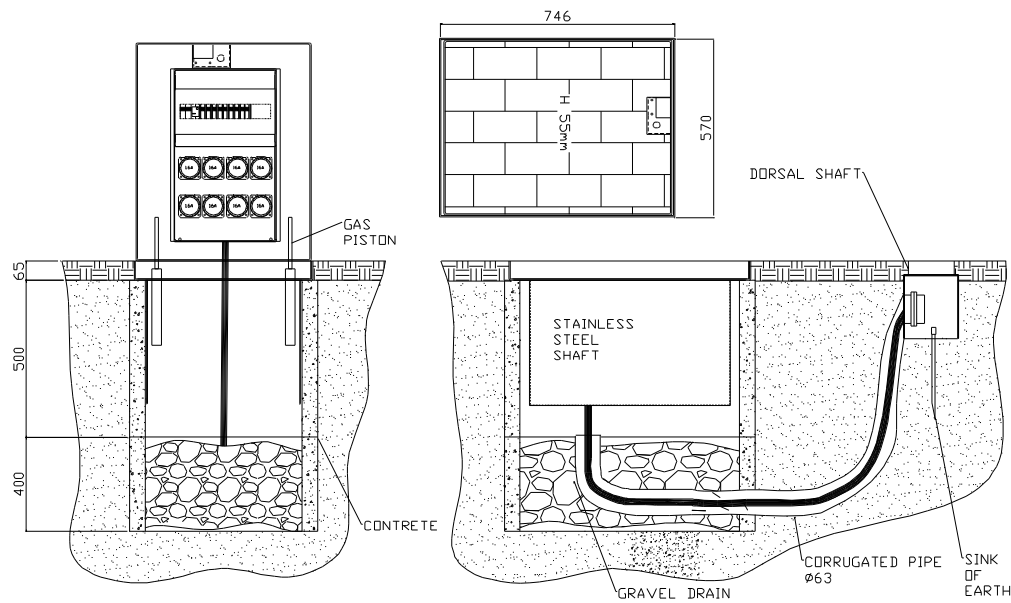
VM02_4040



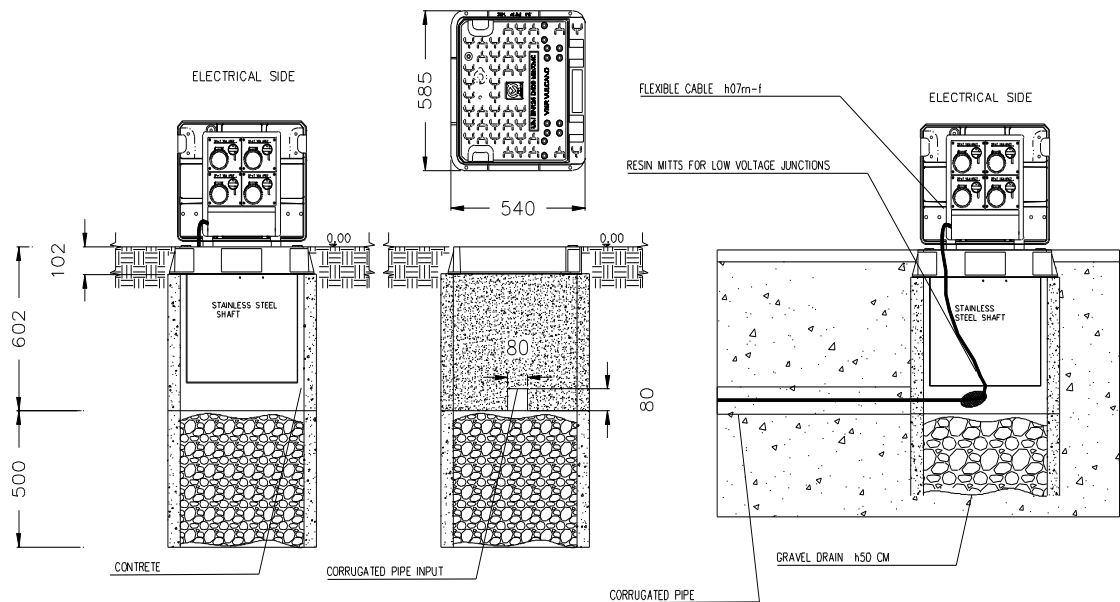
VM02_5050



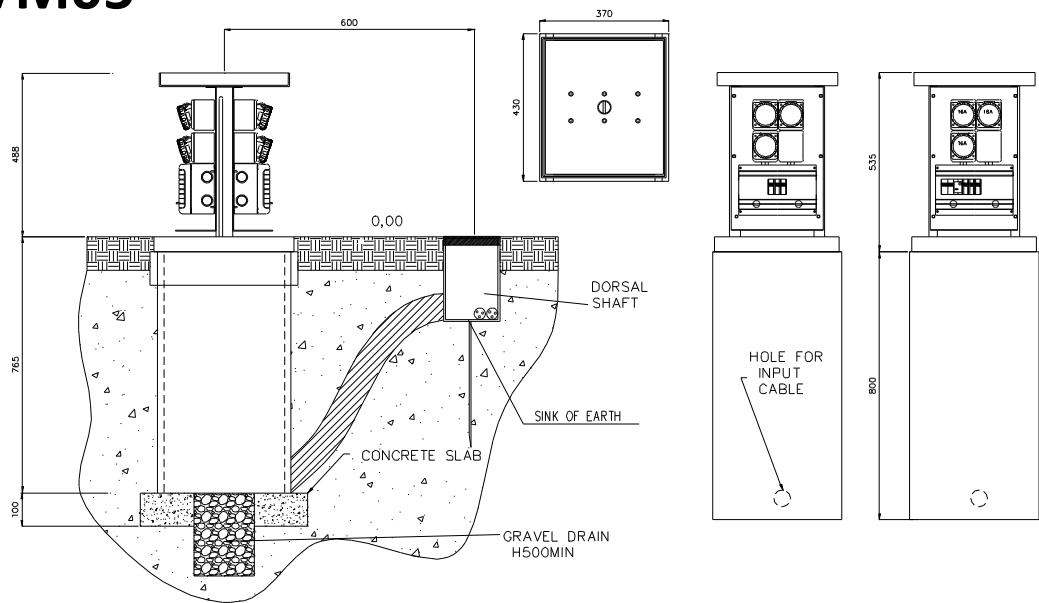
VM02_7050



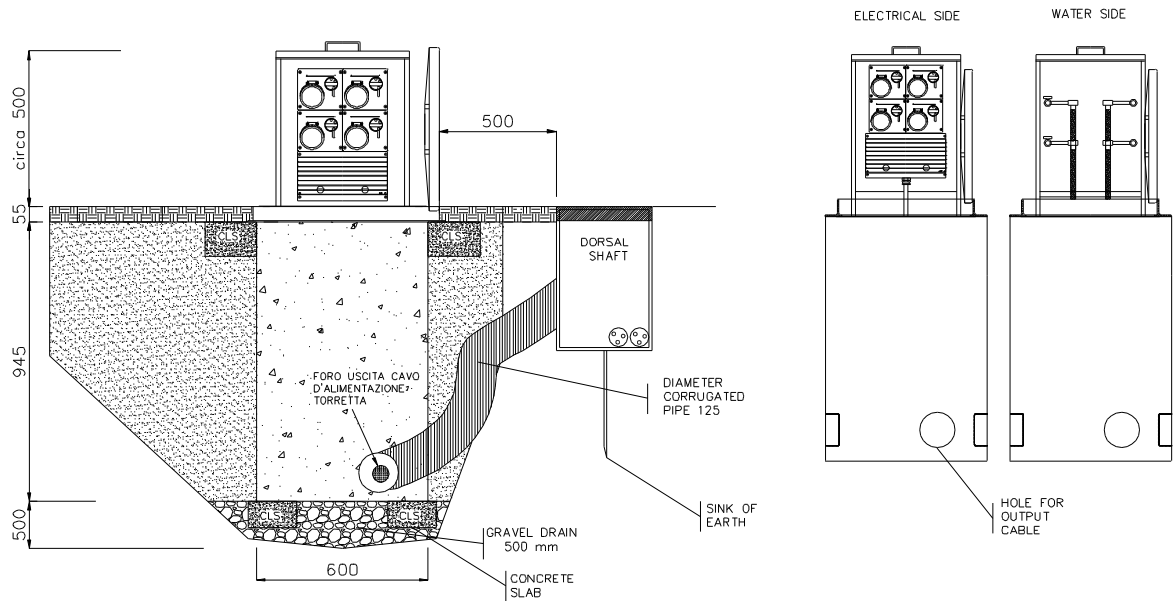
VM03



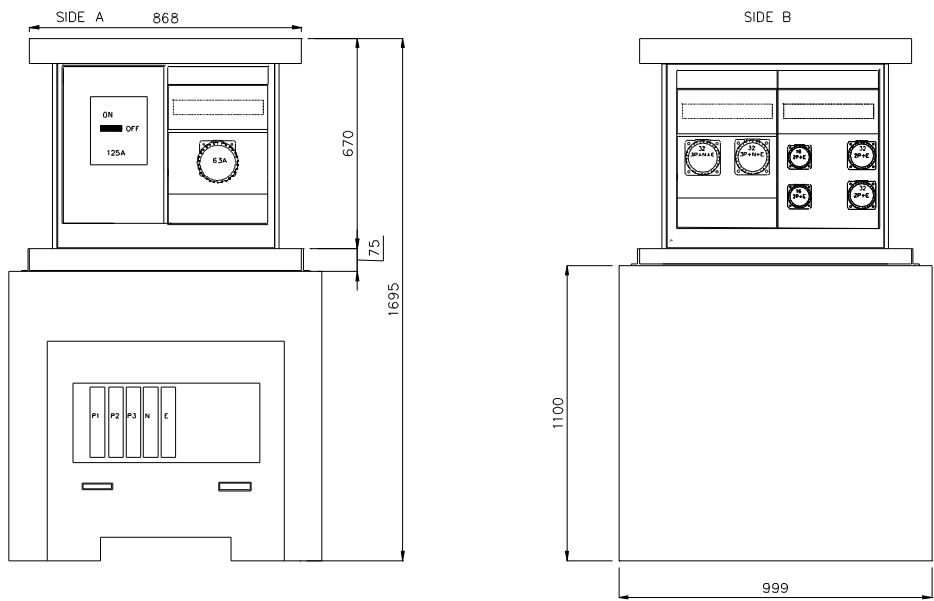
VM04/VM05



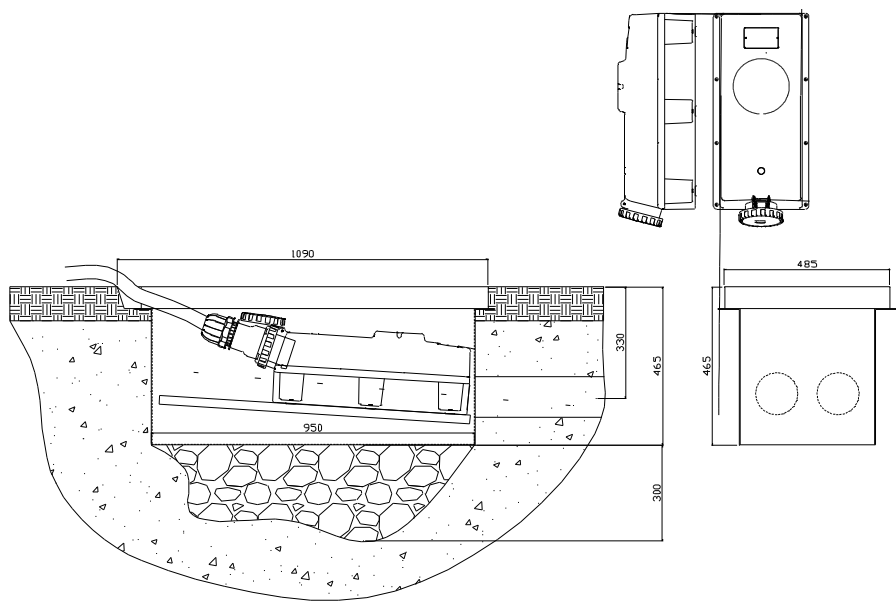
VM07

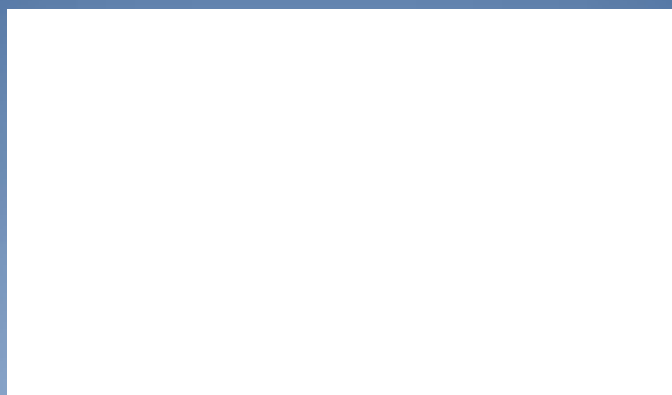


VM08



VM09





VMRsas Via Lario, 31 22060 Cantù (CO) Italy
Tel. +39 031.704673 - fax +39 031.7090081
vmrsas@virgilio.it